



HUNTERS
BRADFORD

Musgrave Mount, Bradford, West Yorkshire, BD2 3LA

HUNTERS[®]

Sales ▪ Lettings ▪ Management

- WELL MAINTAINED SEMI DETACHED DORMA BUNGALOW
- OPEN PLAN LIVING-DINING ROOM
- ENCLOSED WELL MAINTAINED GARDENS
- HIGHLY SOUGHT AFTER LOCATION
- REQUIRES SOME COSMETIC UPDATING

- THREE BEDROOMS
- PATIO DOORS TO GARDEN
- SINGLE GARAGE AND PARKING
- CLOSE TO PUBLIC TRANSPORT
- EPC RATING BAND D - COUNCIL TAX BAND C

Offers In Excess Of £200,000

Musgrave Mount, Bradford, West Yorkshire, BD2 3LA

Presenting this semi-detached Dorma Bungalow, now available for sale in a highly sought-after location. This delightful property offers an excellent opportunity for first-time buyers, families, and investors alike, combining comfort and practicality in a prime setting.

The accommodation comprises of a open plan Living - Dining room, ideal for modern family living and entertaining friends. The home features three thoughtfully designed bedrooms, including a spacious double bedroom and a comfortable single bedroom, catering to a variety of family arrangements and lifestyle needs.

A well-sized bathroom provides essential convenience within this inviting home. The property is completed to a good standard, in need of some cosmetic improvements and the opportunity to make this property your own.

With a single garage and dedicated parking, day-to-day living is made even more convenient

Situated within close reach of public transport links, nearby schools, and a wide range of local amenities, this property offers both convenience and connectivity. The location is popular among families and professionals alike, underlining the enduring appeal of this address.

This semi-detached dorma bungalow perfectly blends comfort, accessibility, and potential—making it a sound investment or a wonderful first home. Arrange a viewing today to fully appreciate all that this superb property has to offer.

EPC RATING GRADE D - COUNCIL TAX BAND C





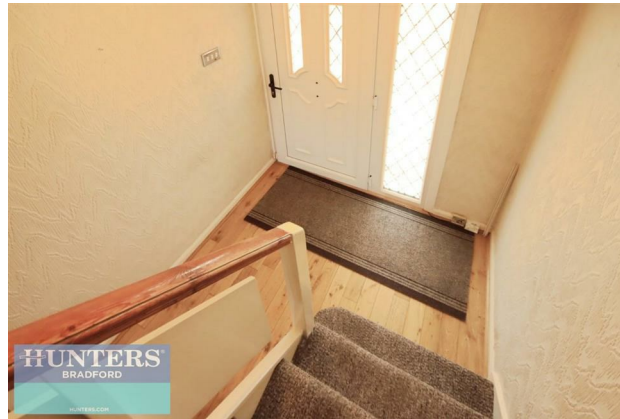
GROUND FLOOR

Hallway

Kitchen
8'7" x 8'8"

Reception Room
11'10" x 16'8"

Dining Room
8'9" x 8'10"



FLOOR ONE

Landing

Bedroom One
15'0" x 10'5"

Bedroom Two
8'8" x 9'3"

Bedroom Three
8'10" x 9'4"



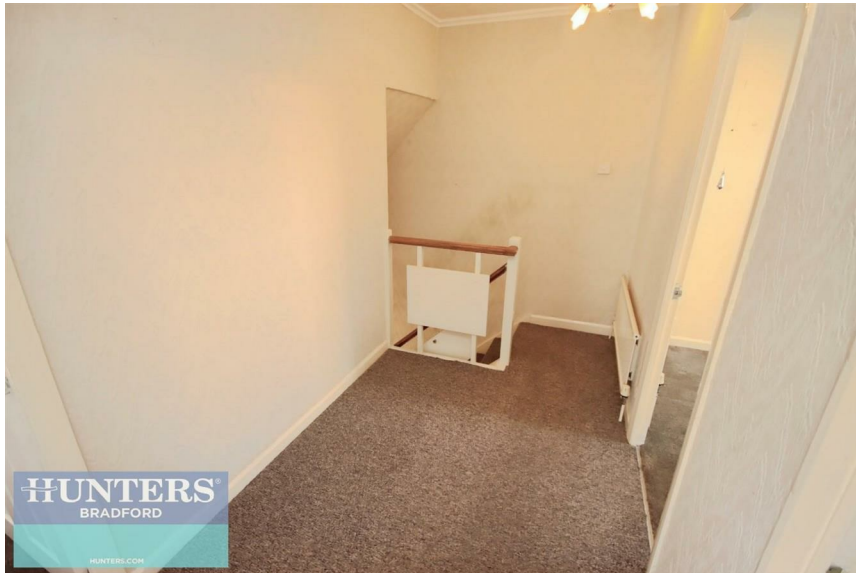
Family Bathroom
5'2" x 6'3"

GARAGE





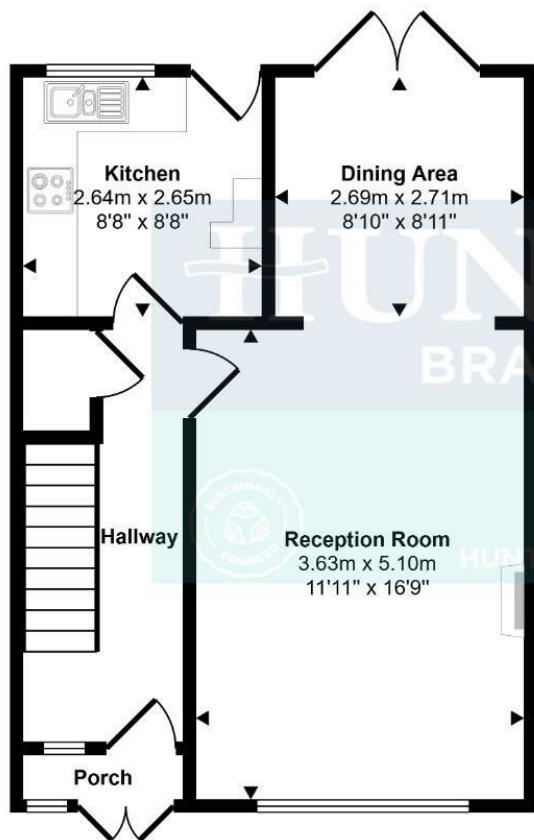
These particulars are intended to give a fair and reliable description of the property but no responsibility for any inaccuracy or error can be accepted and do not constitute an offer or contract. We have not tested any services or appliances (including central heating if fitted) referred to in these particulars and the purchasers are advised to satisfy themselves as to the working order and condition. If a property is unoccupied at any time there may be reconnection charges for any switched off/disconnected or drained services or appliances - All measurements are approximate. If you are thinking of selling your home or just curious to discover the value of your property, Hunters would be pleased to provide free, no obligation sales and marketing advice. Even if your home is outside the area covered by our local offices we can arrange a Market Appraisal through our national network of Hunters estate agents.



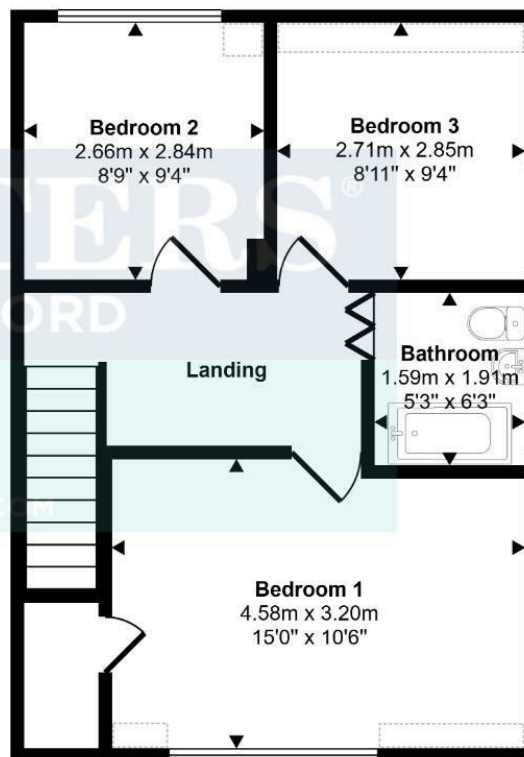




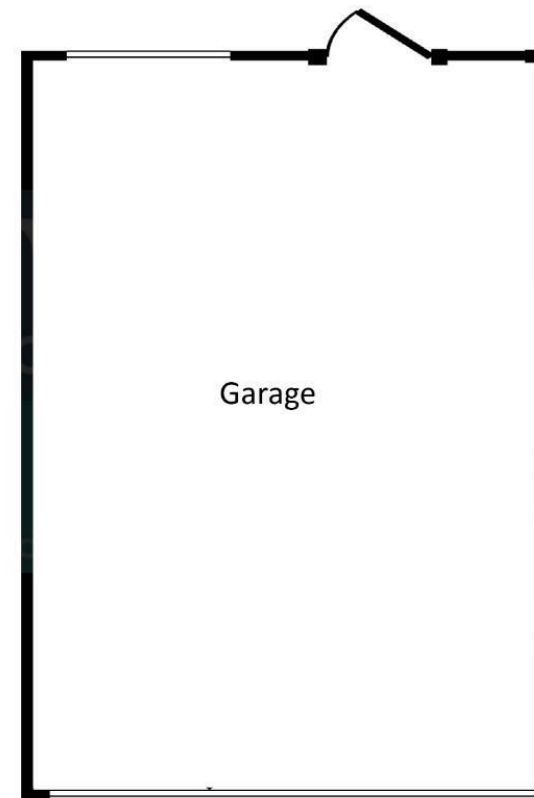




Ground Floor

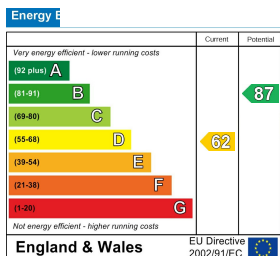


First Floor



Garage

This floorplan is only for illustrative purposes and is not to scale. Measurements of rooms, doors, windows, and any items are approximate and no responsibility is taken for any error, omission or mis-statement. Icons of items such as bathroom suites are representations only and may not look like the real items. Made with Made Snappy 360.



Viewing Arrangements

Strictly by prior appointment only through the agent Hunters Hunters Bradford -
01274 393955 <https://www.hunters.com>



HUNTERS[®]
BRADFORD

HUNTERS.COM